

arketi GROUP

AC
interiors
ANDREA CURVIN
505 County Road 611
Ranburne, AL 36273

Project Description

The purpose of this project was to design a new location for the marketing firm, Arketi Group. Arketi Group is a high-tech PR and marketing firm in Atlanta, Georgia, focused on business-to-business B2B technology public relations and marketing for business-to-business products, BtoB product marketing, and technology marketing. They have selected the Type I high rise building in which they will rent space.

Arketi Group requires a space that represents the exclusivity of their clientele who are well versed in business, marketing and public relations. The design should not only create an interesting and stimulating work environment, but also allow the client, a variety of types of business owners and executives to feel at home as well. Security is supremely important as client confidentiality is crucial. State-of-the-art electronics are also necessary in order to keep up in this fast paced but ever changing industry.

Code Review

Building:	Standard building codes (SBC) Southern Building Code Congress International, Inc., 2000 Edition with Georgia and City of Atlanta Amendments.
Life Safety:	NFPA 101 Life Safety Code, 2000 Edition with Georgia Amendments.
Accessibility:	Georgia Handicapped Accessibility Law 120-3-20
Mechanical:	SBCCI Standard Mechanical Code (International Mechanical Code) 2000 Edition with 2001 GA Amendments.
Electrical:	NFPA National Electrical Code 2002 Edition with 2003 GA amendments.
Plumbing:	SBCCI Standard Plumbing (International Plumbing Code) - 2000 Edition with 2001, 2002, & Georgia Amendments.
Gas:	SBCCI Standard Gas Code (International Fuel Gas Code) - 2000 Edition with 2001, 2002, and 2003 GA amendments.
Energy:	International Energy Conservation Code 2000 Edition with 2003 GA amendments.


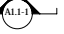
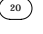
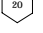
Index of Drawings

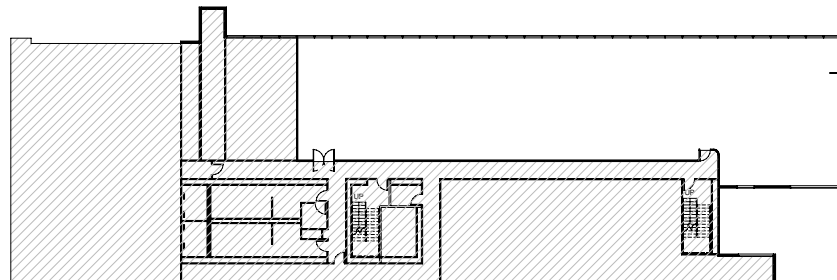
A1.1-1	As Built- Plan
A1.2-1	Partition Plan
A1.3-1	Dimensioned Partition Plan
A1.4-1	Furniture Plan
A1.5-1	Reflected Ceiling Plan
A1.6-1	Power and Communication Plan
A1.7-1	Elevation
A1.7-2	Elevation
A1.7-3	Elevation
A1.7-4	Elevation
A1.7-5	Section
A1.8-1	Life Safety Plan

Page Numbering

A1.0	Cover Sheet
A1.1	As-Built Plan
A1.2	Partition Plan
A1.3	Dimensioned Plan
A1.4	Furniture Plan
A1.5	Reflected Ceiling Plan
A1.6	Power and Communication Plan
A1.7	Elevations and Section
A1.8	Life Safety Plan

Symbol Legend

	Elevation Marker
	Section Marker
	Door Marker
	Door Marker
M.W	Marker Board
P.S.	Projection Screen



Reference

James Pirch
87 Street 100
Carrollton, GA 30117
(404)759-6234

Drawn by:
Andrea Curvin

**Art 4504
Contract Design**

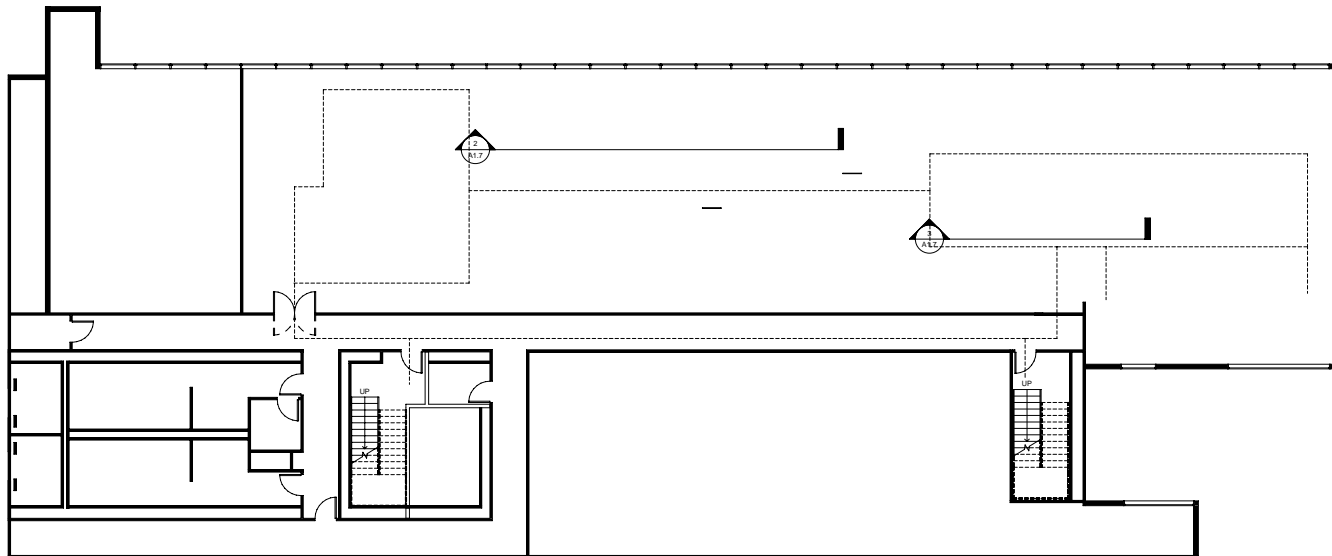
Spring 2010
March 8, 2010

Checked by:
Barry Leach

Sheet Label
Cover Sheet

Sheet Number
A1.0

arketi
GROUP
2801 Buford Highway
Dunwoody, GA 30329
Atlanta, GA 30329



1 As Built Plan
 A1.1 Scale 1'-0" = 1/8"



AC
 interiors
 ANDREA CURVIN
 505 County Road 611
 Ranburne, AL 36273

arketi GROUP
 2801 Buford Highway
 Druid Chase, Suite 375
 Atlanta, GA 30329

Reference

James Pirch
 87 Street 100
 Carrollton, GA 30117
 (404) 759-6234

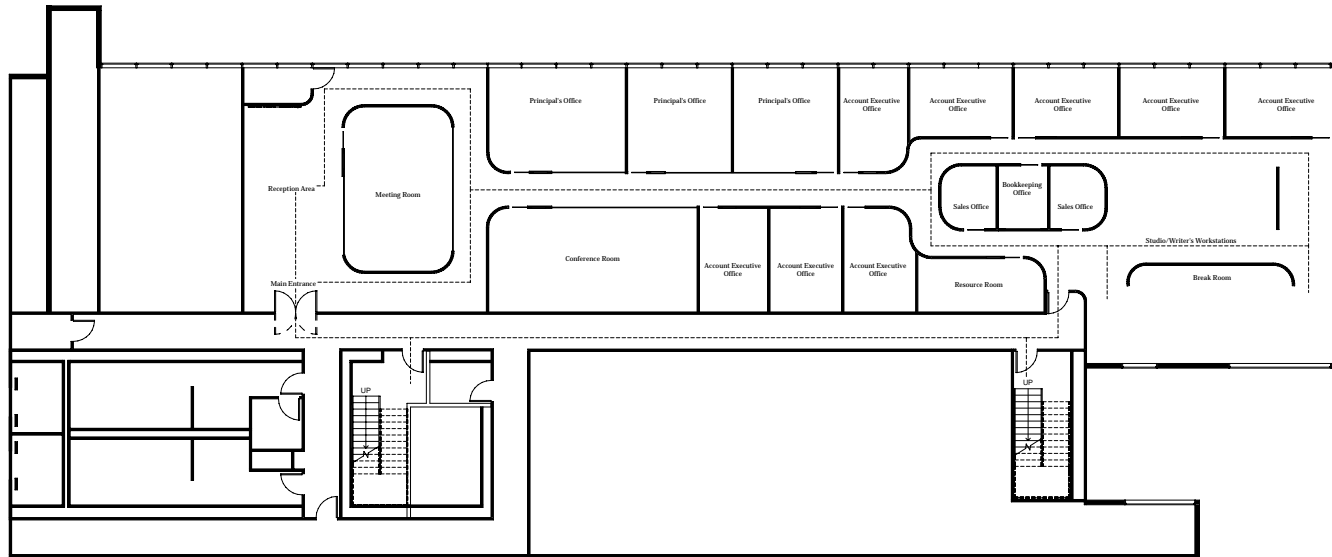
Drawn by:
 Andrea Curvin
Art 4504
Contract Design

Spring 2010
 March 8, 2010

Checked by:
 Barry Leach

Sheet Label
 As-built Plan

Sheet Number
 A1.1



1 Partition Plan
 A1.2 Scale 1'-0" = 1/8"



Partition Plan Notes

1. All Dimensions are from finished face of material to finished face of material unless noted otherwise.
2. Align centerline of partition with the center line of all mullions or columns unless noted otherwise.
3. All Partitions shall be Type I unless otherwise noted with an allowable deflection of L/20. All joints shall be sealed.
4. Reinforce metal studs of partitions with continuous vertical fire treated wood studs for wall hung cabinets and other millwork or equipment.
5. Coordinate partition layout with mechanical, electrical and plumbing work. Notify the designer to resolve any conflicts with the elements.
6. Verify the locations, sizes and specific requirements of all freestanding, under cabinet and built-in equipment prior to beginning shop drawings.
7. Verify that fire extinguishers are wall mounted or recessed cabinets. If they are recessed cabinets, verify that wall thickness is adequate for recessed cabinet.
8. Contractor shall verify all dimensions shown on the plan and shall notify the designer of any discrepancies prior to construction.
9. All light switches, thermostats, window treatment or AV equipment controls, fire strobes or pull stations are located in accordance with the typical mounting heights and locations shown on elevation drawing.
10. Provide water resistant gypsum board at all restroom and breakroom wet walls. Metal stud spacing shall be 16" O.C. at all ceramic tile partitions.
11. Seal all sound partitions with acoustical sealant at base, head and all openings.
12. Provide finished wall construction under and behind all equipment and casework.
13. "Align" as indicated on the drawings means to align the indicated finish materials of the walls or columns indicated.

AC
 interiors
 ANDREA CURVIN
 505 County Road 611
 Ranburne, AL 36273

arketi GROUP
 2801 Buford Highway
 Druid Chase, Suite 375
 Atlanta, GA 30329

Reference

James Pirch
 87 Street 100
 Carrollton, GA 30117
 (404)759-6234

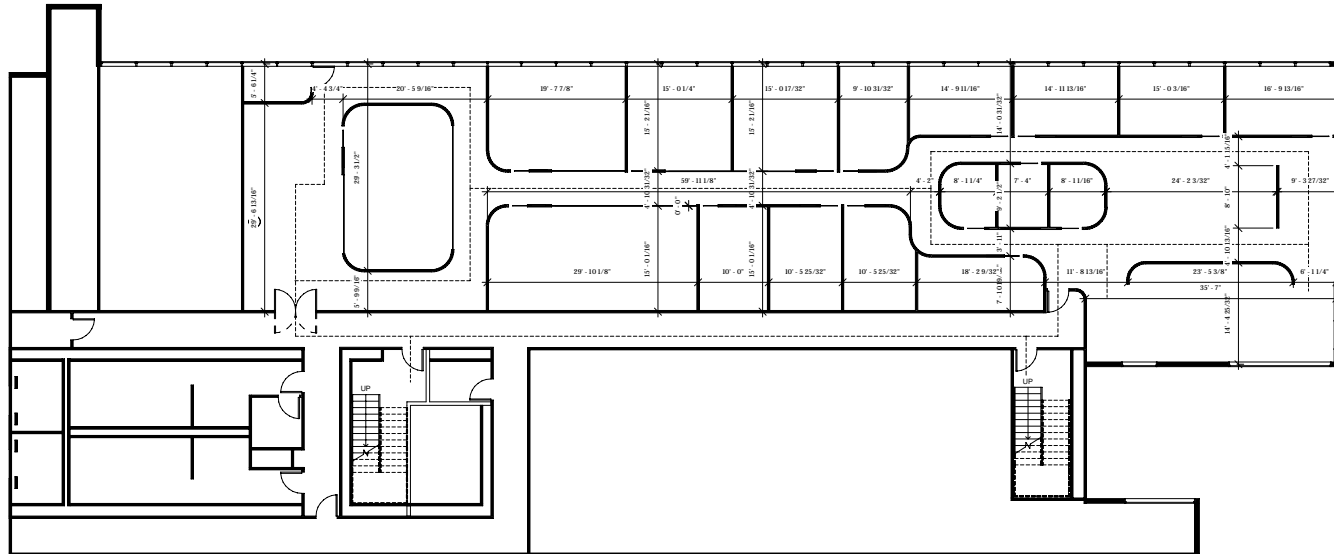
Drawn by:
 Andrea Curvin
Art 4504
Contract Design

Spring 2010
 March 8, 2010

Checked by:
 Barry Leach

Sheet Label
 Partition Plan

Sheet Number
 A1.2



1 Dimensioned Partition Plan
 A1.3 Scale 1'-0" = 1/8"



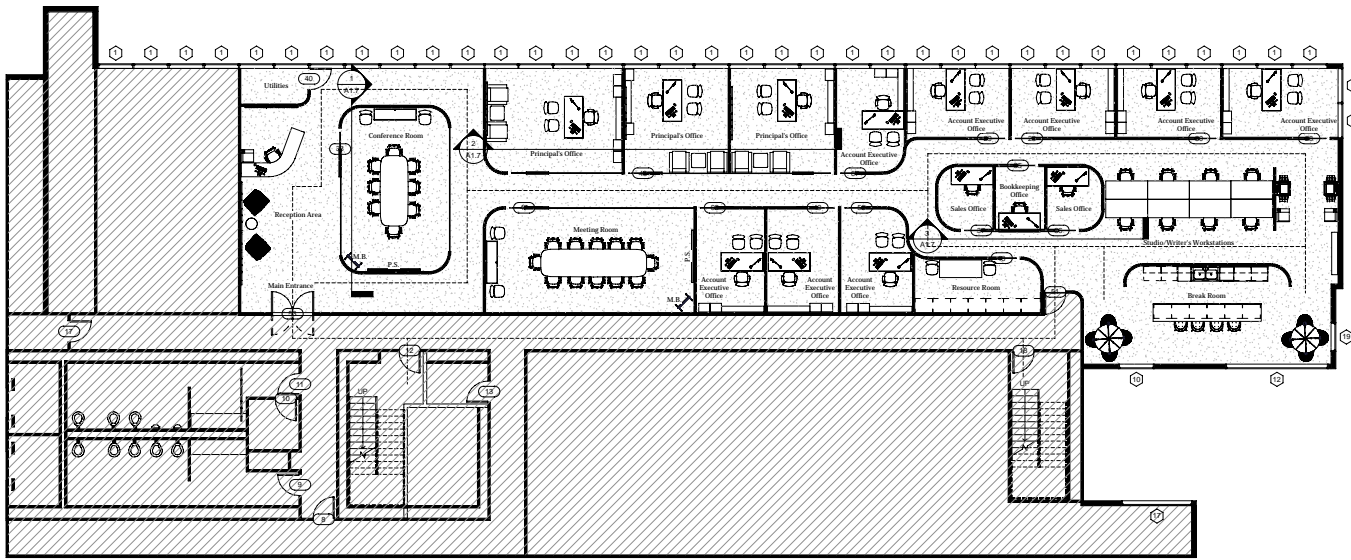
AC
 interiors
 ANDREA CURVIN
 505 County Road 611
 Ranburne, AL 36273

arketi GROUP
 2801 Buford Highway
 Druid Chase, Suite 375
 Atlanta, GA 30329

Reference
 James Pirch
 87 Street 100
 Carrollton, GA 30117
 (404)759-6234

Drawn by:
 Andrea Curvin
Art 4504
Contract Design
 Spring 2010
 March 8, 2010
Checked by:
 Barry Leach

Sheet Label
 Dimensioned
 Partition Plan
Sheet Number
 A1.3



1 Furniture Plan
A1.4 Scale 1'-0" = 1/4"



Code Data		
	NFPA 2000	IBC 2000
Business allowable travel distance	200' Maximum (300' sprinkled)	200' Maximum (300' sprinkled)
Business common path of travel	75' Maximum (100' sprinkled)	75' Maximum (100' sprinkled)
Business dead end corridor	20' Maximum (50' sprinkled)	20' Maximum (50' sprinkled)

Door Schedule			
Mark	Model	Type	Width
8		36" x 84"	3'-0"
9		36" x 84"	3'-0"
10		36" x 84"	3'-0"
11		36" x 84"	3'-0"
12		36" x 84"	3'-0"
13		36" x 84"	3'-0"
17		36" x 84"	3'-0"
19		36" x 84"	3'-0"
26		3' x 7'	3'-0"
28		3' x 7'	3'-0"
29		3' x 7'	3'-0"
30		3' x 7'	3'-0"
35		3' x 7'	3'-0"
36		3' x 7'	3'-0"
37		3' x 7'	3'-0"
38		3' x 7'	3'-0"
40		36" x 84"	3'-0"
43		32" x 84"	2'-8"
47		32" x 84"	2'-8"
48		32" x 84"	2'-8"
49		3' x 7'	3'-0"
50		3' x 7'	3'-0"
51		36" x 84"	3'-0"
53		72" x 84"	6'-0"
55		32" x 84"	2'-8"
56		3' x 7'	3'-0"
66		32" x 96"	2'-8"
67		32" x 96"	2'-8"

Window Schedule			
Head Height	Mark	Width	Model
9'-10"	1	5'-0"	
9'-10"	2	5'-0"	
9'-10"	3	5'-0"	
9'-10"	4	5'-0"	
9'-10"	5	5'-0"	
9'-10"	6	5'-0"	
9'-10"	7	5'-0"	
9'-10"	8	5'-0"	
9'-10"	9	5'-0"	
9'-10"	10	5'-0"	
9'-10"	11	5'-0"	
9'-10"	12	5'-0"	
9'-10"	13	5'-0"	
9'-10"	19	5'-0"	
9'-10"	22	5'-0"	
9'-10"	25	5'-0"	
9'-10"	26	5'-0"	
9'-10"	27	9'-5"	
9'-10"	28	14'-6"	
9'-10"	29	32'-0"	
9'-10"	30	4'-1"	
9'-10"	31	30'-0"	
9'-10"	32	30'-0"	
9'-10"	34	10'-0"	
9'-10"	37	4'-1"	
9'-10"	38	14'-6"	
9'-10"	39	5'-0"	
9'-10"	45	5'-0"	
9'-10"	46	5'-0"	
9'-10"	47	5'-0"	
9'-10"	48	5'-0"	
9'-10"	49	5'-0"	
9'-10"	50	5'-0"	
9'-10"	51	5'-0"	
9'-10"	52	5'-0"	
9'-10"	53	5'-0"	
9'-10"	54	5'-0"	
9'-10"	55	5'-0"	
9'-10"	56	5'-0"	
9'-10"	57	5'-0"	
9'-10"	58	5'-0"	
9'-10"	59	5'-0"	
9'-10"	60	5'-0"	
9'-10"	61	5'-0"	
9'-10"	62	5'-0"	
9'-10"	63	5'-0"	
9'-10"	64	5'-0"	
9'-10"	65	5'-0"	
9'-10"	66	5'-0"	
9'-10"	67	5'-0"	
9'-10"	68	5'-0"	
9'-10"	69	5'-0"	
9'-10"	70	5'-0"	
9'-10"	71	5'-0"	
9'-10"	72	5'-0"	
9'-10"	73	5'-0"	
9'-10"	74	5'-0"	
9'-10"	75	5'-0"	
9'-10"	76	5'-0"	
9'-10"	77	5'-0"	
9'-10"	78	5'-0"	
9'-10"	80	5'-0"	

AC
interiors
ANDREA CURVIN
505 County Road 611
Ranburne, AL 36273

arketi GROUP
2801 Buford Highway
Druid Chase, Suite 375
Atlanta, GA 30329

Reference
James Pirch
87 Street 100
Carrollton, GA 30117
(404)759-6234

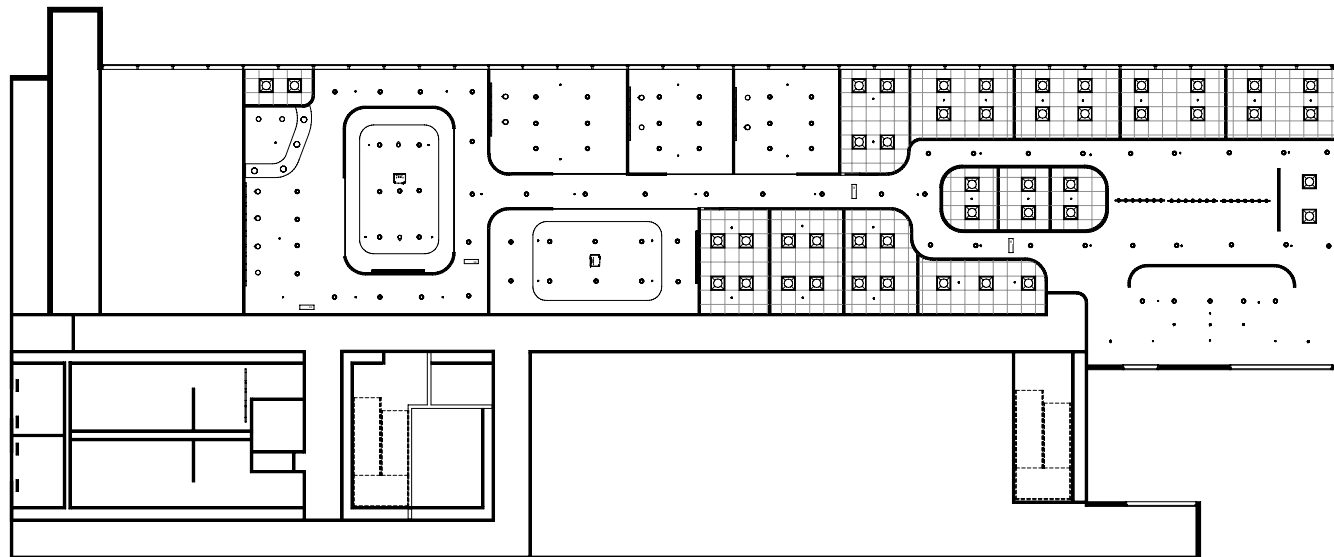
Drawn by:
Andrea Curvin
Art 4504
Contract Design

Spring 2010
March 8, 2010

Checked by:
Barry Leach

Sheet Label
Furniture Plan






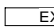

Sheet Number
A1.4



1 Reflected Ceiling Plan
 A1.5 Scale 1'-0" = 1/8"



RCP Legend

	2x2 Acoustic Ceiling Tile
	2x2 Fluorescent Fixture
	Recessed Sprinkler
	Ceiling Projector
	Recessed Can Light
	Exit Sign
	Recessed Wall washer

Reflected Ceiling Plan Notes

1. Refer to reflected ceiling plan legend for all symbols.
2. All ceilings heights shall be 9'6" A.F.F. and shall be a suspended acoustic tile.
3. All sprinkler heads, exit signs, smoke detectors, speakers, recessed lights, etc. shall be centered with the ceiling tile.
4. Contractors shall verify the location of all light fixtures and coordinate installation with the mechanical and electrical contractors. Notify the designer of any conflicts prior to installation.
5. Verify locations of all access ceiling panels in gypsum board ceilings prior to construction. Contractor shall submit a cut sheet of panel to be used, if none is specified, refer to designer for approval.
6. Contractor shall be responsible for notifying the designer of any additional access panels not shown on the drawings which are needed for access to mechanical or electrical items above the ceiling.
7. Screened ceiling grid and devices indicates these items are existing and must remain unless noted otherwise.
8. Patch existing ceilings as necessary where demolition has occurred.

AC
 interiors
 ANDREA CURVIN
 505 County Road 611
 Ranburne, AL 36273

arketi
 GROUP
 2801 Buford Highway
 Druid Chase, Suite 375
 Atlanta, GA 30329

Reference

James Pirch
 87 Street 100
 Carrollton, GA 30117
 (404)759-6234

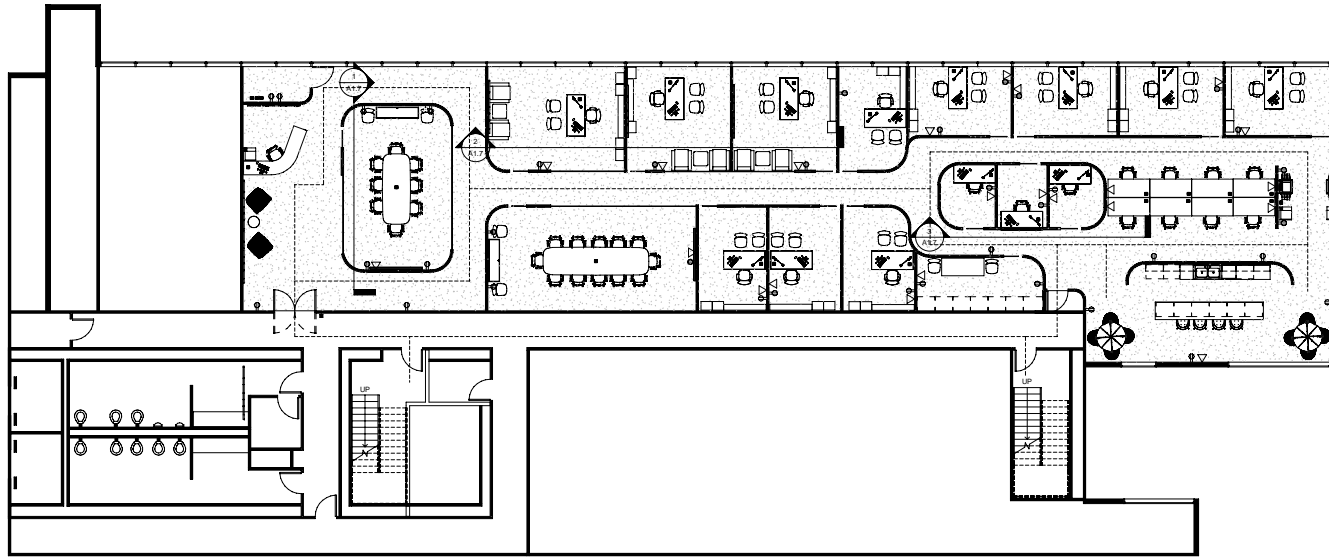
Drawn by:
 Andrea Curvin
Art 4504
Contract Design

Spring 2010
 March 8, 2010

Checked by:
 Barry Leach

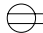
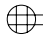




Sheet Label
 Reflected Ceiling Plan

Sheet Number
 A1.5



1 Power and Communication Plan
 A1.6 Scale 1'-0" = 1/8"

PCP Legend

	Duplex Receptacle
	Quadplex Receptacle
	Floor Outlet with Quadplex Receptacle
	Voice/Data Receptacle
	Television Cable
	Card Reader

PCP Notes

1. All Outlets shall be mounted at 18" A.F.F. to center line of outlet unless noted otherwise.
2. All outlet devices and coverplates shall be white in color unless noted otherwise.
3. This plan is to be used for location of outlets only and should not be used as a substitution for an electrical engineering document. Refer to all appropriate engineering documents for reference. Refer to all appropriate engineering drawings for all circuitry and more specific information regarding the type of outlet required.
4. All electrical is dimensioned to the centerline of device. If two devices are shown side by side the dimension is to the centerline of both devices. Install these two devices as close together as possible.
5. The contractor is responsible for the final connection of any powered systems furniture unless noted otherwise.
6. Contractor shall provide grommets in all millwork where outlets are located below countertops.
7. Contractor to verify locations of floor cores in the field with interior designer and furniture rep. prior to coring.

AC
 interiors
 ANDREA CURVIN
 505 County Road 611
 Ranburne, AL 36273

arketi GROUP
 2801 Buford Highway
 Druid Chase, Suite 375
 Atlanta, GA 30329

Reference

James Pirch
 87 Street 100
 Carrollton, GA 30117
 (404)759-6234

Drawn by:
 Andrea Curvin
Art 4504
Contract Design

Spring 2010
 March 8, 2010

Checked by:
 Barry Leach

Sheet Label
 Power and
 Communication Plan

Sheet Number
 A1.6

AC
interiors
ANDREA CURVIN
505 County Road 611
Ranburne, AL 36273

arketi
GROUP
2801 Buford Highway
Druid Chase, Suite 375
Atlanta, GA 30329

Reference

James Pirch
87 Street 100
Carrollton, GA 30117
(404)759-6234

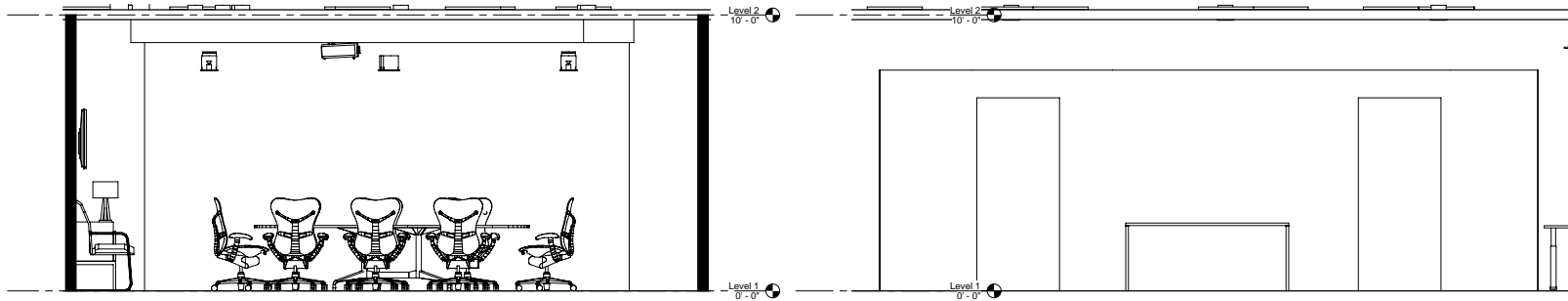
Drawn by:
Andrea Curvin
Art 4504
Contract Design

Spring 2010
March 8, 2010

Checked by:
Barry Leach

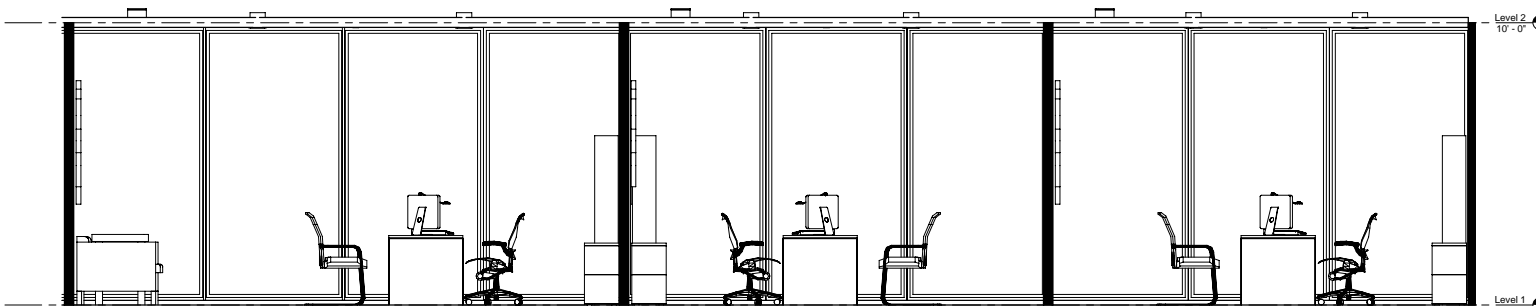
Sheet Label
Elevations

Sheet Number
A1.7



① Conference Room
1/2" = 1'-0"

③ Sales and Book keeper's office
1/2" = 1'-0"



② Principal's Offices
1/2" = 1'-0"